

GIBSON ELECTRIC DESIGN-BUILD SERVICES

Top to Bottom. Front to Back. Design-Build is Your Single-Source Solution.

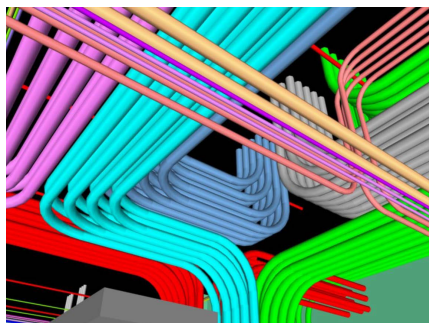
HUNDREDS
OF PROJECTS.
NINE MAJOR
MARKETS SERVED.

- Biotech/Healthcare
- Commercial
- Education
- Entertainment/Hospitality
- Manufacturing/Industrial
- Mission Critical Facilities
- Public/Government
- Technology
- Transportation



Gibson Electric is an ISO 9001:2015-certified electrical construction firm specializing in commercial electrical and telecommunication infrastructure design, structured cabling installation and maintenance, electrical power distribution systems, data transmission systems, and Distributed Antenna Systems (DAS).

Gibson Electric is a proven design-build contractor with experience in new construction, renovation, and retrofit projects. From estimation, and pre-construction to engineering, construction, and post-construction, Gibson Electric serves as a customer's single point of contact for each phase of a project.



Project Value. Every Step of the Way.

Utilizing advanced technology and years of industry experience, Gibson Electric integrates efficient, cost-saving solutions throughout each phase of a project.

Solving Problems. Before They Happen.

During preconstruction and design, Gibson Electric links current and future facility needs with a client's financial benchmarks, in order to develop a project strategy that stays on schedule and within budget. 3D Building Information Modeling (BIM) technology is used to identify potential design problems before construction. BIM provides clients a real-time visualization of different design options which helps them make more informed decisions over the course of the project.

GIBSON ELECTRIC DESIGN-BUILD SERVICES



True Industry Professionals. From Concept to Completion.

Gibson Electric's design-build team consists of professional technicians, engineers, and construction experts who are committed to delivering high-quality facilities that are built to last. In order to help fulfill this commitment, Gibson Electric arms their team with the finest equipment and materials on the market.

After construction is complete, Gibson Electric offers walk-throughs, hands-on training, and core documentation for owners and their employees. Long-term maintenance and service options are also available to help extend the lifespan of a facility.

Design-Build Benefits.

Design-build services can bring multiple benefits to a project, including:

- Continuous control of project costs
- Value engineering with owner input and real-time budget
- Full project coordination, from design through construction
- Concurrent design and construction to facilitate accelerated schedules
- Single-source, one-stop solution for design, installation, and operation of systems, warranty, and service

While You Work, Injuries Lurk. Be Vigilant.

EMCOR's safety performance consistently remains strong year after year with a current rate that surpasses competitors by 60-75% and ranks 66% lower than the Bureau of Labor Statistics industry average.

(Source: Bureau of Labor Statistics Industry Average for Specialty Contractors NAICS 238, 2012-2017)

Harnessing the Power of a Fortune 500® Leader.

A Fortune 500® company, EMCOR Group, Inc. (NYSE: EME) is a leader in mechanical and electrical construction, industrial and energy infrastructure, and building services.

EMCOR specializes in planning, installing, operating, maintaining, and protecting the sophisticated and dynamic systems that create facility environments. This includes systems such as electrical, mechanical, lighting, air conditioning, heating, security, fire protection, and power generation.

With over 180 locations and approximately 33,000 skilled employees, EMCOR works in virtually every sector of the economy for a diverse range of businesses, organizations, and government agencies.

HOW CAN WE HELP YOU?

Gibson Electric

3100 Woodcreek Drive
Downers Grove, Illinois 60515-5427

T: 630.288.3800

F: 630.743.2100 Electrical Division

F: 630.743.2101 Technologies Division

www.gibsonelec.com

