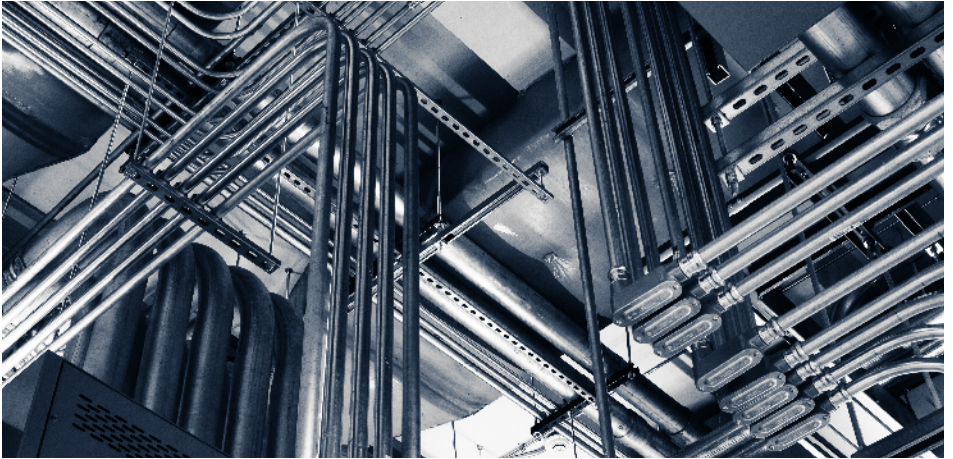


## GIBSON ELECTRIC PREFABRICATION

# What Does Prefabrication Offer? Exactly What You Need. When You Need It.



HUNDREDS  
OF PROJECTS.  
NINE MAJOR  
MARKETS SERVED.

- Biotech/Healthcare
- Commercial
- Education
- Entertainment/Hospitality
- Manufacturing/Industrial
- Mission Critical Facilities
- Public/Government
- Technology
- Transportation

**Gibson Electric** is an ISO 9001:2015-certified electrical construction firm specializing in commercial electrical and telecommunication infrastructure design, structured cabling installation and maintenance, electrical power distribution systems, data transmission systems, and distributed antenna systems (DAS).

Gibson Electric has a full-scale 5,000-square-foot fabrication workspace with an additional 31,000 square feet of warehouse space. With a team of expert technicians leading the way, Gibson Electric's prefabrication shop can lend assistance on projects ranging from tenant services to high-tech data centers—and everything in between.

### **Cutting-edge Tools. Custom Solutions. Increased Cost Savings.**

Prefabrication services create custom solutions that can add value to a project by reducing labor time, increasing efficiency, and keeping projects on-schedule. Gibson Electric's fabrication facility is furnished with cutting edge tools and equipment, including Building Information Modeling (BIM) utilizing Revit technology, which helps enable low-labor, high-quality assembly. Preassembled materials can also streamline the on-site installation process, which reduces overall project time, increases workplace safety, and provides cost-savings.



## GIBSON ELECTRIC PREFABRICATION



### **Insight to Innovate. Expertise to Execute.**

Gibson Electric works closely with trade contractors and vendors to coordinate the flow of labor and materials, which helps guarantee a project has exactly what it needs at just the right time. Employees are always prepared for the technical aspects of their work, as well as for the complex management requirements and advanced material-handling processes that are unique to prefabrication. Most importantly, Gibson Electric has the insight to envision a construction project from start to finish, determining which project materials should be prefabricated, at what scale, and exactly when to install them.

### **A Full-Suite of Prefabrication Services.**

#### **Designed With Clients In Mind.**

- Conduit and raceway support systems
- Electrical whips
- Load center modifications with conduits
- Pre-punched boxes and brackets
- Wired and non-wired device assemblies
- Light fixture preparation
- Large or small conduit bending
- Temporary lighting or power
- Threading rigid conduits
- Conduit sleeves

### **While You Work, Injuries Lurk. Be Vigilant.**

EMCOR's safety performance consistently remains strong year after year with a current rate that surpasses competitors by 60-75% and ranks 66% lower than the Bureau of Labor Statistics industry average.

*(Source: Bureau of Labor Statistics Industry Average for Specialty Contractors NAICS 238, 2012-2017)*

### **Harnessing the Power of a Fortune 500® Leader.**

A Fortune 500® company, EMCOR Group, Inc. (NYSE: EME) is a leader in mechanical and electrical construction, industrial and energy infrastructure, and building services.

EMCOR specializes in planning, installing, operating, maintaining, and protecting the sophisticated and dynamic systems that create facility environments. This includes systems such as electrical, mechanical, lighting, air conditioning, heating, security, fire protection, and power generation.

With over 180 locations and approximately 33,000 skilled employees, EMCOR works in virtually every sector of the economy for a diverse range of businesses, organizations, and government agencies.

## HOW CAN WE HELP YOU?

**Gibson Electric**  
3100 Woodcreek Drive  
Downers Grove, Illinois 60515-5427

**T: 630.288.3800**  
**F: 630.743.2100** Electrical Division  
**F: 630.743.2101** Technologies Division  
[www.gibsonelec.com](http://www.gibsonelec.com)

