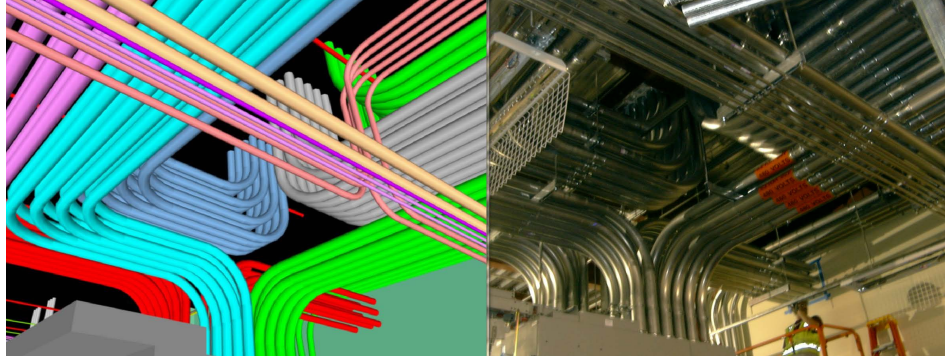


GIBSON ELECTRIC ELECTRICAL CONSTRUCTION

Reliable. Experienced. Innovative. Exceptional Electrical Construction Services.

HUNDREDS
OF PROJECTS.
NINE MAJOR
MARKETS SERVED.

- Biotech/Healthcare
- Commercial
- Education
- Entertainment/Hospitality
- Manufacturing/Industrial
- Mission Critical Facilities
- Public/Government
- Technology
- Transportation



Gibson Electric is an ISO 9001:2015-certified electrical construction firm specializing in commercial electrical and telecommunication infrastructure design, structured cabling installation and maintenance, electrical power distribution systems, data transmission systems, and distributed antenna systems (DAS). Gibson Electric offers a complete array of reliable, expert commercial electrical services for projects ranging from small to large, simple to complex. Gibson Electric's combination of innovative construction management and electrical systems technical expertise means their experienced technicians can handle virtually any job.

From One Light to One-Thousand, Single-Source Electrical Solutions.

Offering a full suite of electrical construction services, Gibson Electric has the capabilities and expertise needed to handle both large-scale installations and small-scale service jobs. Regardless of size or scope, Gibson Electric remains committed to customer satisfaction and strives to meet exacting standards and rigid specifications on every project.

Comprehensive Services. For Virtually Any Electrical Construction Need.

Gibson Electric's wide array of electrical construction services include, but are not limited to:

- Building Information Modeling (BIM)/Computer-Aided Design (CAD)/Coordination
- Electrical Construction
- Tenant Build-Outs and Renovations
- Mission Critical
- Structured Cabling
- Distributed Antenna Systems (DAS)
- Prefabrication
- Riser Management
- Design-Build
- Sustainability
- Industrial
- A/V Installations
- Site-Based Maintenance
- Services/Special Projects
- Central Office/DC Power Wiring

GIBSON ELECTRIC ELECTRICAL CONSTRUCTION



Certified Technicians. Cutting-Edge Technology. Superior Service.

Gibson Electric is committed to offering professional services and a safe work environment. In order to fulfill this commitment, Gibson Electric hires qualified commercial electricians and supports them with industry-leading technology. Both field and office staff are employed on an ongoing basis in order to encourage top performance, and Gibson Electric's field electricians undergo a thorough apprenticeship in order to develop hands-on industry experience.

While You Work, Injuries Lurk. Be Vigilant.

EMCOR's safety performance consistently remains strong year after year with a current rate that surpasses competitors by 60-75% and ranks 66% lower than the Bureau of Labor Statistics industry average.

(Source: Bureau of Labor Statistics Industry Average for Specialty Contractors NAICS 238, 2012-2017)

Harnessing the Power of a Fortune 500® Leader.

A Fortune 500® company, EMCOR Group, Inc. (NYSE: EME) is a leader in mechanical and electrical construction, industrial and energy infrastructure, and building services.

EMCOR specializes in planning, installing, operating, maintaining, and protecting the sophisticated and dynamic systems that create facility environments. This includes systems such as electrical, mechanical, lighting, air conditioning, heating, security, fire protection, and power generation.

With over 180 locations and approximately 33,000 skilled employees, EMCOR works in virtually every sector of the economy for a diverse range of businesses, organizations, and government agencies.



HOW CAN WE HELP YOU?

Gibson Electric
3100 Woodcreek Drive
Downers Grove, Illinois 60515-5427

T: 630.288.3800
F: 630.743.2100 Electrical Division
F: 630.743.2101 Technologies Division

www.gibsonelec.com

