



SPECIAL PROJECTS

Large Projects. Small Projects. Special Projects. Gibson Electric Has the Perfect Solution.



Gibson
An EMCOR Company

Gibson Electric is an electrical construction firm specializing in commercial electrical and telecommunication infrastructure design, structured cabling installation and maintenance, electrical power distribution systems, data transmission systems, and Distributed Antenna Systems (DAS).

Regular preventive maintenance is critical for a successful building management program—it helps preserve the initial capital investment in both buildings and equipment, while enhancing the sustainability and comfort of facilities. Successful preventive maintenance programs also help determine overall operating costs and reduce the disruptions caused by emergency repairs, or by equipment that must be replaced after it has broken down.

Gibson Services Teams Respond Anywhere They're Needed.

Employing a specialized team of mobile technicians ready to respond at a moment's notice using a fleet of service vans, Gibson Electric's mobile service team solution is one clients can depend on.

Special Projects. Need Special Solutions.

When small construction projects arise— like fixing an outlet, troubleshooting a generator, or retrofitting a small area or office space—Gibson Services Team can assist. Gibson Electric has electrical maintenance technicians available to handle a variety of electrical services. Mobile-based technicians self-perform both scheduled general maintenance services and on-demand, common repair work or modifications for clients.

HUNDREDS OF PROJECTS. NINE MAJOR MARKETS SERVED.

Biotech/Healthcare

Commercial

Education

Entertainment/Hospitality

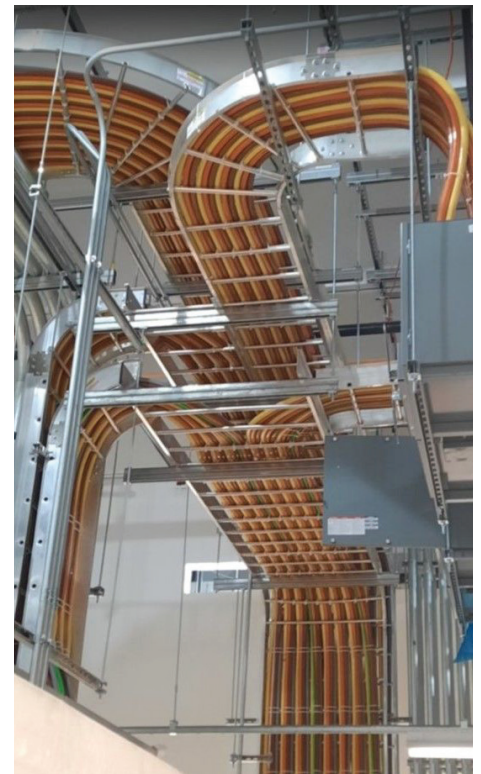
Manufacturing/Industrial

Mission Critical Facilities

Public/Government

Technology

Transportation





Harnessing the Power of a Fortune 500® Leader.

A Fortune 500® company, EMCOR Group, Inc. (NYSE: EME) is a leader in mechanical and electrical construction, industrial and energy infrastructure, and building services.

EMCOR specializes in planning, installing, operating, maintaining, and protecting the sophisticated and dynamic systems that create facility environments. This includes systems such as electrical, mechanical, lighting, air conditioning, heating, security, fire protection, and power generation.

With over 180 locations and approximately 38,000 skilled employees, EMCOR works in virtually every sector of the economy for a diverse range of businesses, organizations, and government agencies.

WHAT CAN WE DO FOR YOU?

Gibson Electric

3100 Woodcreek Drive
Downers Grove, Illinois 60515
T: 630.288.3800
gibsonelec.com

GIBSON ELECTRIC CAN PERFORM MODIFICATIONS AND MAINTENANCE SERVICES ON:

Power

- Electrical distribution systems
- Lighting controls
- Branch wiring
- Busduct
- Emergency power systems
- Temporary power and light
- Infrared scanning and testing

Technology

- Structured cable
- Fiber optic systems
- Distributed Antenna Systems (DAS)
- Riser management
- Sound masking
- Paging
- Fire alarm
- Access control
- Video monitoring

Safety that Beats the National Average

EMCOR's safety performance consistently remains strong year after year with a current Incident Rate that is 52-percent lower than our competitors (Source: Bureau of Labor Statistics Industry Average for Specialty Contractors NAICS 2382, 2022). For 15 consecutive years, our incident rate has been less than half the industry average.