



**BUILDING INFORMATION
MODELING (BIM)**

**Advanced Software
for More Efficient, More
Effective Project Delivery.**



Gibson
An EMCOR Company

Gibson Electric is electrical construction firm specializing in commercial electrical and telecommunication infrastructure design, structured cabling installation and maintenance, electrical power distribution systems, data transmission systems, and distributed antenna systems (DAS). Our virtual construction department boasts more than 40 years of combined building information modeling (BIM) coordinating experience. Our advanced BIM technology is tightly integrated into our work processes, helping us to avoid rework, identify constructability issues, leverage prefabrication opportunities, and communicate effectively within our own teams and among fellow contractors.

Model-Based Prefabrication for Rapid Construction

Our team uses Autodesk Revit to create intelligent models, allowing our shop to pre-fabricate electrical panels, junction boxes, hangers, conduit bends, strut assemblies and more. Pre-fabrication helps us shorten installation schedules while improving safety and quality control.

On the Drawing Board and In the Field, Leveraging BIM for Success

BIM coordination can only benefit construction if it is effectively communicated to installation and construction teams in the field. By utilizing laptops and portable handheld devices, we ensure our foremen have access to the latest information in real-time. All contract documents, installation drawings, field layout points, markups, and 3D modeling are hosted in the cloud for rapid access, anytime, anywhere. And, we go a step further, by providing training in these technologies for all foremen and office personnel.

WHAT CAN WE DO FOR YOU?

Gibson Electric
3100 Woodcreek Drive
Downers Grove, Illinois 60515
T: 630.288.3800
gibsonelec.com

HUNDREDS OF PROJECTS. NINE MAJOR MARKETS SERVED.

Biotech/Healthcare

Commercial

Education

Entertainment/Hospitality

Manufacturing/Industrial

Mission Critical Facilities

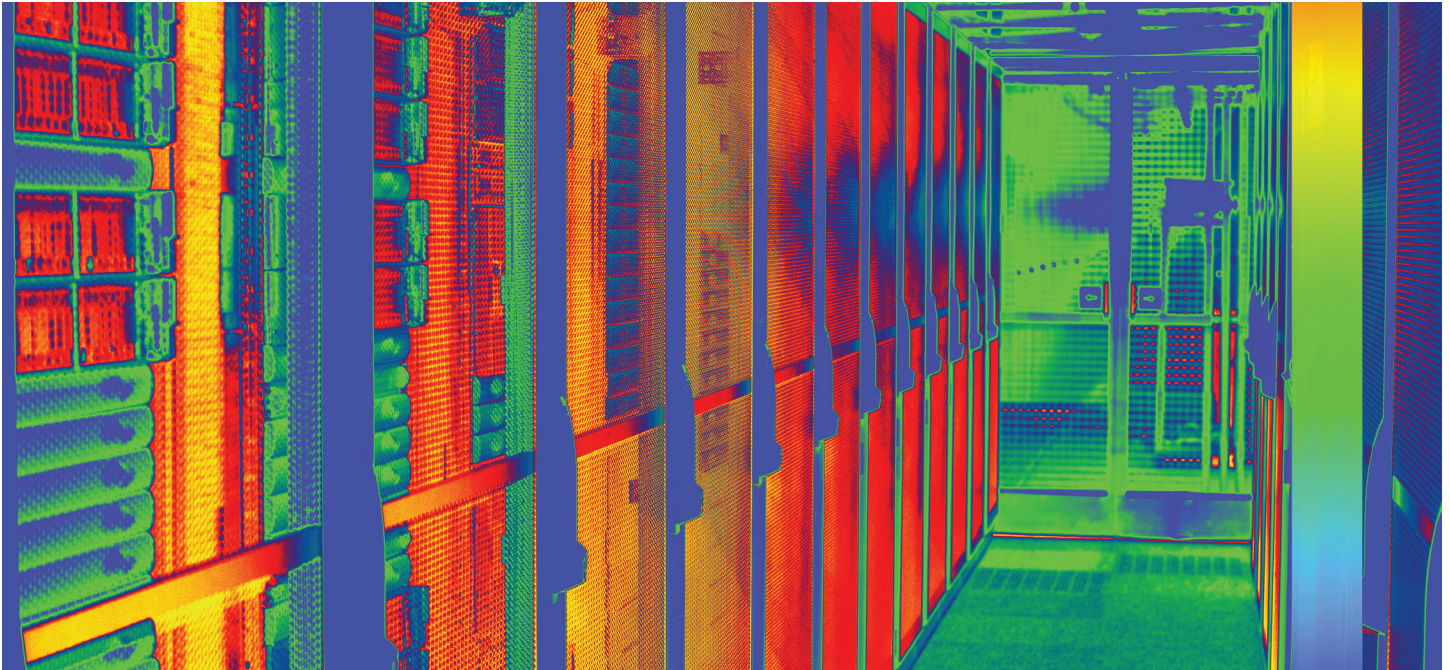
Public/Government

Technology

Transportation

Mission Critical Project Leadership

Customers often look to Gibson to run or assist BIM coordination for all subcontractors on mission critical projects. Backed by long-standing industry relationships, we take a collaborative approach to help ensure BIM supports construction schedules while allowing coordinators to work quickly and efficiently.



Local Expertise, National Experience

As a subsidiary of EMCOR Group, Inc., our BIM team is a valuable resource to our sister companies; we have completed projects with them across the country. Similarly, we are able to draw on the talent of those companies, adding flexibility and scalability to our capabilities.

Harnessing the Power of a Fortune 500® Leader.

A Fortune 500® company, EMCOR Group, Inc. (NYSE: EME) is a leader in mechanical and electrical construction, industrial and energy infrastructure, and building services.

EMCOR specializes in planning, installing, operating, maintaining, and protecting the sophisticated and dynamic systems that create facility environments. This includes systems such as electrical, mechanical, lighting, air conditioning, heating, security, fire protection, and power generation.

With over 180 locations and approximately 38,000 skilled employees, EMCOR works in virtually every sector of the economy for a diverse range of businesses, organizations, and government agencies.

Safety that Beats the National Average

EMCOR's safety performance consistently remains strong year after year with a current Incident Rate that is 52-percent lower than our competitors (Source: Bureau of Labor Statistics Industry Average for Specialty Contractors NAICS 2382, 2022). For 15 consecutive years, our incident rate has been less than half the industry average.

WHAT CAN WE DO FOR YOU?

Gibson Electric

3100 Woodcreek Drive
Downers Grove, Illinois 60515

T: 630.288.3800

gibsonelec.com